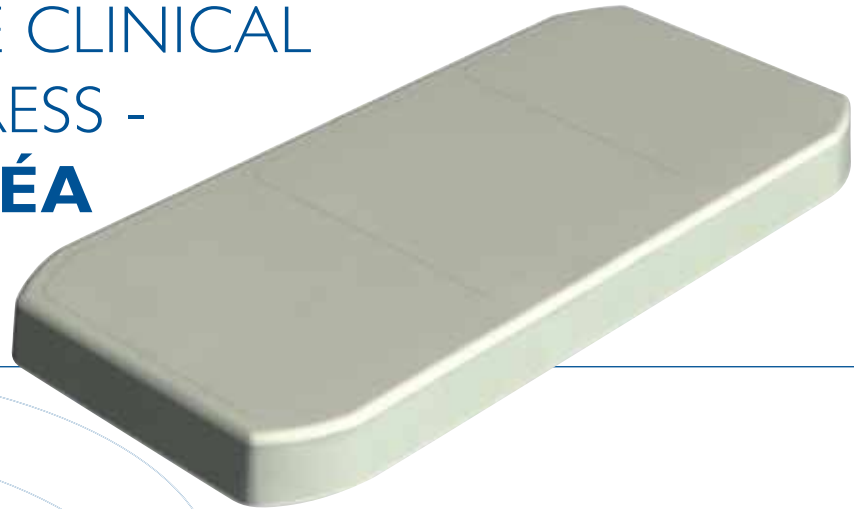


SINGLE CLINICAL MATTRESS - MORFÉA



FOAM MATTRESS FOR MEDICAL ACCOMMODATIONS

- Mattress with 4 cut sections to perfectly adapt to all types of medical bed bases and their accessories.
- Highly Resilient (HR) ZYPREX foam, 35 kg/m³ with a very comfortable smooth surface.
- Complete cover with openings on 3 sides, 3 materials to choose from.



White PVC



Blue Promust PU



Blue Promust PUHD

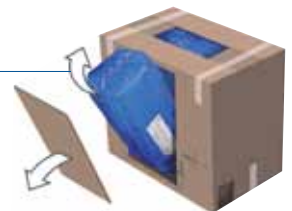
PALETTE BOX

- **Practical:** the mattress is ready for use.
- **Ecological:** reduces the volume of waste.



COMPRESSED ROLL (RC)

- **Ergonomic:** light, easy to grip (carry straps are available)
- **Ecological:** increases the transport capacity of vehicles.



TECHNICAL CHARACTERISTICS

| PRODUCT NAME | REFERENCE ACCORDING TO PRESENTATION AND PACKAGING | | | SIZES: | PATIENT WEIGHT | FIRE STANDARDS |
|--|---|-------------------------|--|-----------|-----------------|---|
| | BOX | PALETTE BOX | COMPRESSED ROLL | | | |
| MORFEA MATTRESS cut sections, complete PVC BIOPLAST* cover | VMB14 | VMB14-BOX (per 10) | — | 195x88x14 | 30 to 120 kg | EN 597-1 et 2 GPEM D1 90 Class C |
| MORFEA MATTRESS cut blocks, complete Promust PU* cover | VMB14/HIP | VMB14/HIP-BOX (per 10) | VMB14RC1-HIP (per unit) VMB14RC-HIP (per 5) | | | EN 597-1 and 2 GPEM D1 90 Class D |
| MORFEA MATTRESS cut blocks, complete Promust PU HD cover | VMB14/ HIPH | VMB14/HIPH-BOX (per 10) | — | | | |

Guaranteed 2 ans.

For users at risk from bedsores

Nil to low